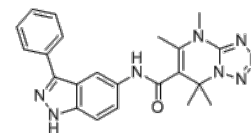


Product Name : EB-42486
Cat. No. : PC-72160
CAS No. : 2390475-81-5
Molecular Formula : C₂₂H₂₂N₈O
Molecular Weight : 414.473
Target : LRRK2
Solubility : 10 mM in DMSO



Biological Activity

EB-42486 is a potent, selective **G2019S-LRRK2** kinase inhibitor with IC₅₀ of 3.1 nM (pS935-LRRK2) in FRET-based assay, >300-fold selective over WT-LRRK2.

EB-42486 potently inhibits pS1292-LRRK2 G2019S in Meso Scale Discovery (MSD) electrochemiluminescence assay with IC₅₀ of 1.7 nM, 70-fold selective over WT LRRK2.

EB-42486 exhibits impressive kinome selectivity against a panel of 409 kinases at 100 nM.

EB-42486 inhibits phosphorylation of the LRRK2 substrate, Rab10, 344-fold more potently in the G2019S-LRRK2 overexpression line with IC₅₀ of 11.4 nM, compared to that in the WT-LRRK2 overexpression line.

EB-42486 inhibits pS935-LRRK2 837-fold more potently in the G2019S-LRRK2 line (IC₅₀ = 2.5 nM) compared to that in the WT-LRRK2 line.

References

Albert W Garofalo, et al. *J Med Chem*. 2020 Dec 10;63(23):14821-14839.

Caution: Product has not been fully validated for medical applications. Lab Use Only!

E-mail: tech@probechem.com